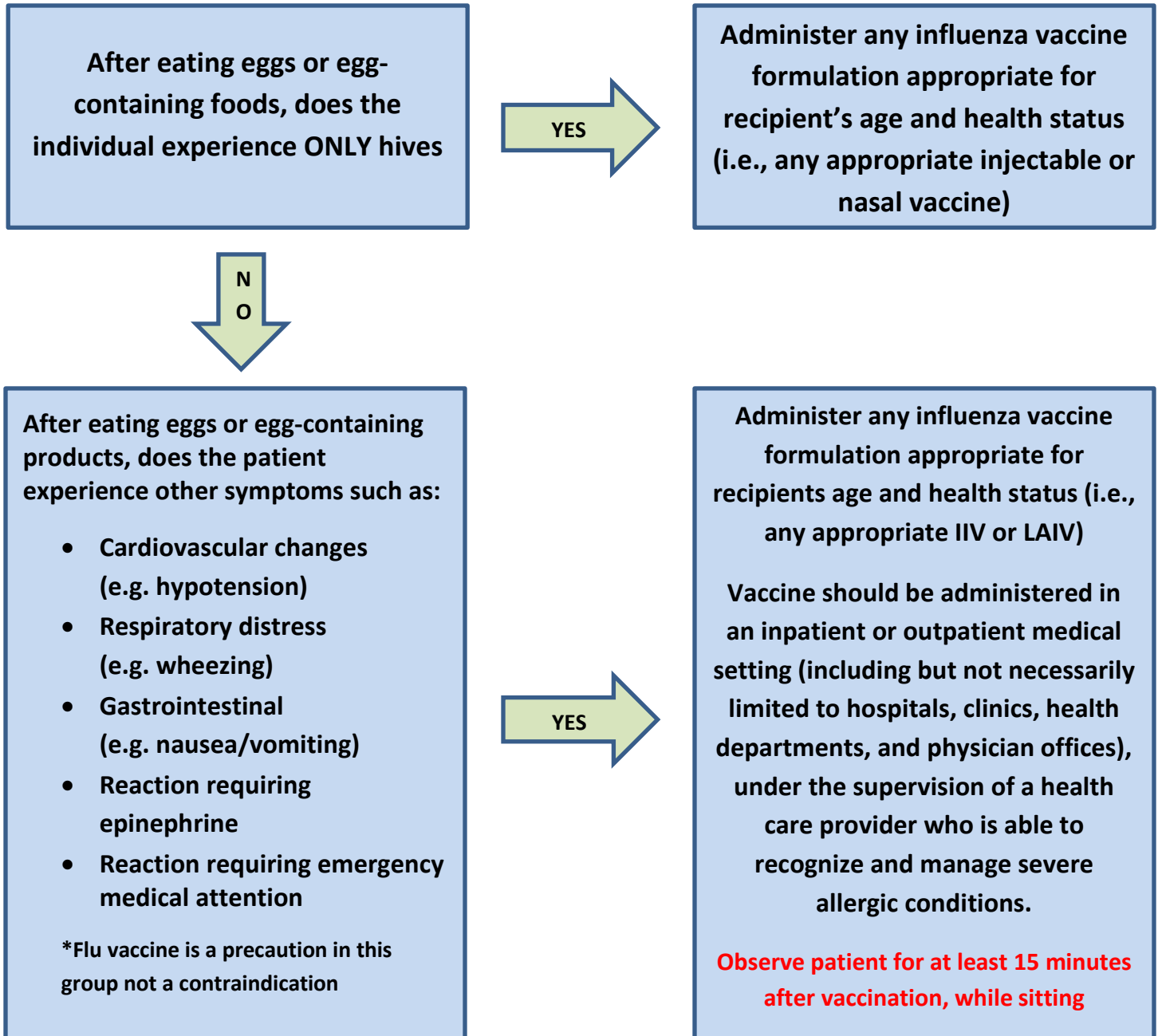


## 2018-2019 Influenza Vaccine Screening Algorithm for Persons who Report Egg Allergies

**Reminder: A prior severe allergic reaction to influenza vaccine, regardless of the component suspected to be responsible for the reaction, is a contraindication to receiving influenza vaccine.**



All Clinics should be prepared to deal with a reaction should it occur. Your clinic should have an emergency plan in place and each staff member should know their responsibilities in the event of an emergency. An emergency kit should be maintained and routinely checked to make sure supplies are adequate and that none of the emergency medications have expired.

- Appropriate staff members should be BLS certified.